



A Home on the Prairie

by David C. Lion



AUDIO

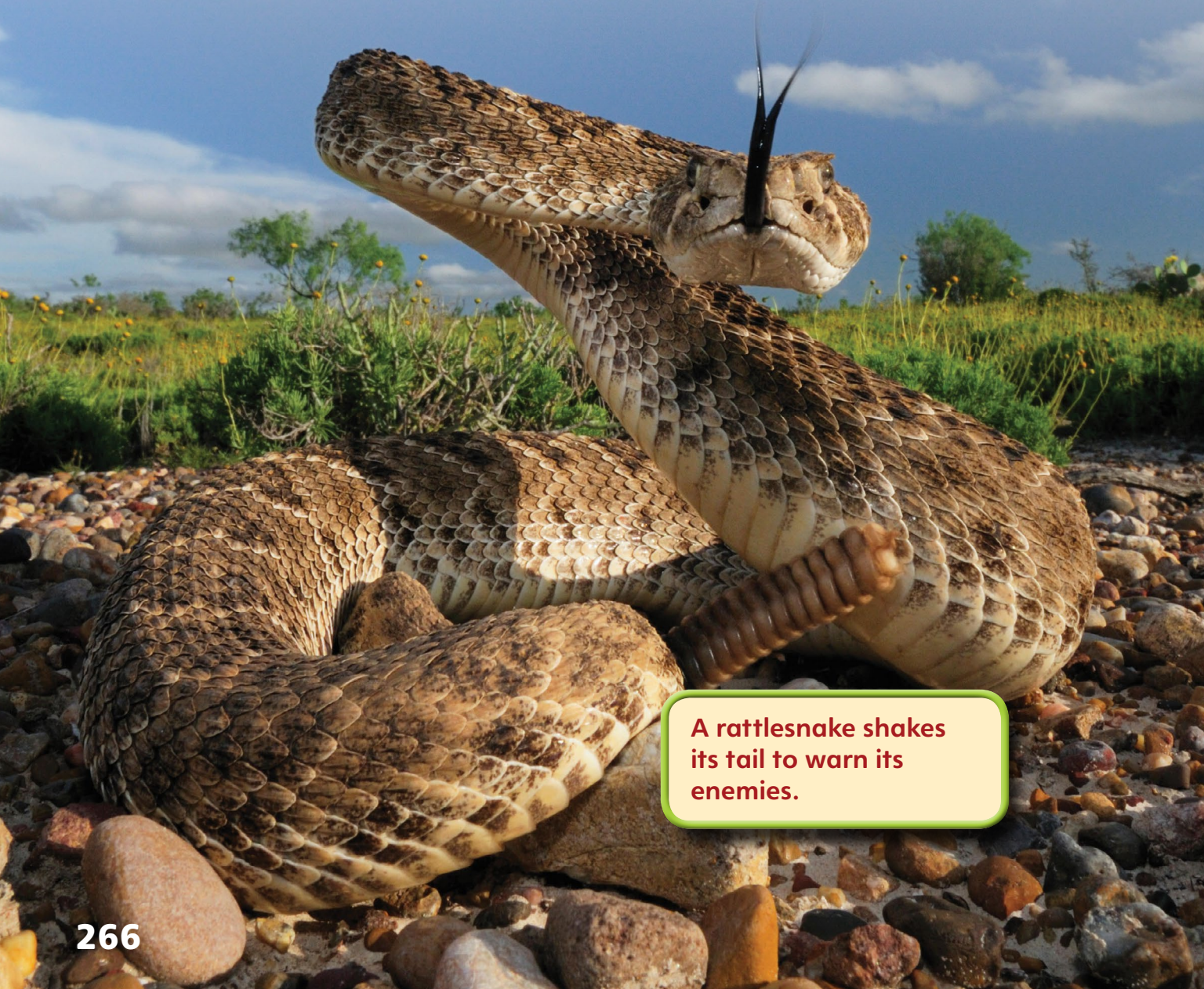
Audio with
Highlighting



ANNOTATE

What Is This Place?

- 1 Just imagine you're surrounded by tall grass. When you look up, you see nothing but sky.
- 2 You hear a rattlesnake shake its tail. You watch a prairie dog dive into a hole.
- 3 Where are we?



A rattlesnake shakes its tail to warn its enemies.



Prairies have very few trees.

CLOSE READ



Confirm or Adjust Predictions

Highlight a bold word that helped you predict the topic of this text.

- 4 We're on a North American **prairie**!
- 5 A prairie is a type of **habitat**. A habitat is where a plant or animal usually lives.
- 6 A prairie is a large, open grassland with almost no trees.

prairie a large, open grassland with very few trees

habitat the place where a plant or animal usually lives



Vocabulary in Context

Look for clues to the meanings of unfamiliar words within or beyond the sentence the word appears in. Find the word *bison*. Underline the synonym, or the word that means the same as *bison*.

- 7 Many different kinds of grasses grow on the prairie. There are tallgrass, mixed-grass, and short-grass prairies.
- 8 **Bluestem** and Indian grass are the tallest grasses on the prairie.
- 9 **American bison** roam the prairies. Another name for bison is buffalo.

American bison

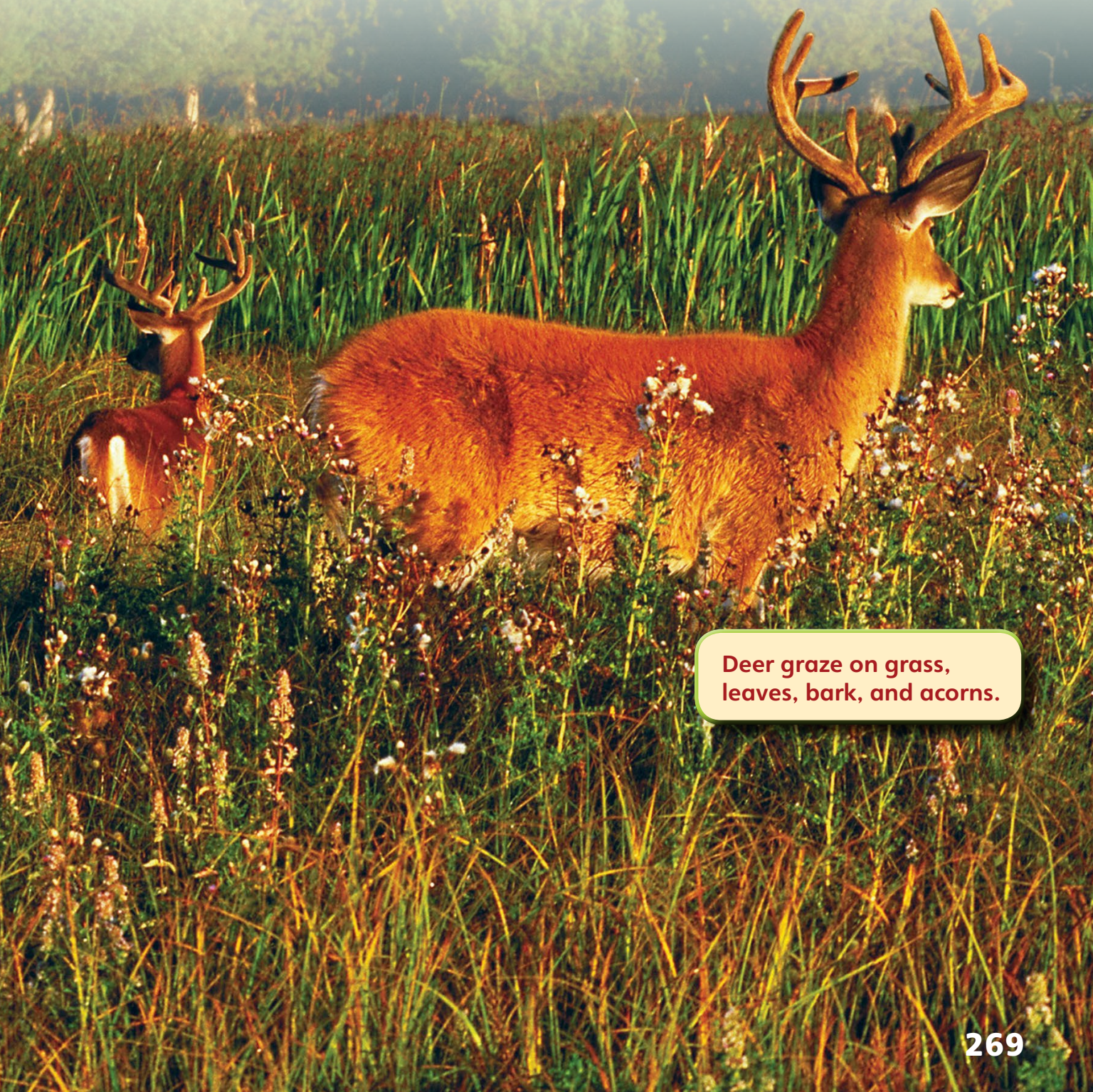




CLOSE READ

10 Bison and deer are prairie **grazers**, which means they feed on prairie grasses.

grazers animals that feed on growing grasses



Deer graze on grass, leaves, bark, and acorns.



Text Features

Underline the label that helps you locate the burrow in the photo.

Confirm Predictions

Did the facts in the text match the prediction you made before reading? What information in the text surprised you?

burrows holes or tunnels in the ground that are made by a small animal



- 11 Many prairie animals live in underground holes called **burrows**. Badgers, black-footed ferrets, prairie dogs, and burrowing owls all spend time in these holes.



Most owls live in trees.
But burrowing owls live in
underground holes!





Text Features

Underline the part of the photo caption that tells you where prairie dogs got their name.

colonies groups of animals that live in one place

- 12 Prairie dog burrows connect to form groups, or **colonies**. These colonies are almost like underground towns.



Prairie dogs got their name from the loud barking noise they make.



13 The prairie is an exciting place to explore! Peek among the tall grasses. You'll meet this black-footed ferret and other truly amazing animals that live in this habitat!





CLOSE READ



Text Features

Underline the heading that tells you the main topic of these two pages.

Confirm or Adjust Predictions

Did you need to adjust or revise your prediction based on information in the text?

A Day in the Life of a Rattlesnake

How does a rattlesnake spend most of its time?

- 14 A rattlesnake hides in burrows or under rocks or plants.

What does a rattlesnake eat?

- 15 A rattlesnake eats mice, ground squirrels, and younger prairie dogs and rabbits.



TEKS 2.6.C Make, correct, or confirm predictions using text features, characteristics of genre, and structures; TEKS 2.9.D.ii Recognize characteristics and structures of informational text, including features and graphics to locate and gain information.



What are a rattlesnake's enemies?

- 16 Humans, hawks, and eagles are a rattlesnake's enemies.

Does a rattlesnake have a special trick?

- 17 A rattlesnake rattles its tail as a warning to stay away.



Your New Words

- 1 **American bison** (uh-mer-uh-kuhn bye-suhn) prairie animals with large heads and high, humped shoulders
- 2 **bluestem** (blu-stehm) one of the tallest types of prairie grass
- 3 **burrows** (bur-ohz) holes or tunnels in the ground that are made by a small animal
- 4 **colonies** (kol-uh-nee-z) groups of animals that live in one place
- 5 **grazers** (grayz-urz) animals that feed on growing grasses
- 6 **habitat** (hab-uh-tat) the place where a plant or animal usually lives
- 7 **prairie** (prer-ee) a large, open grassland with very few trees





Index

- 8 **A** American bison, 268, 269
- 9 **B** badgers, 270
black-footed ferrets, 270, 273
bluestem grass, 268
buffalo, 268
burrowing owls, 270, 271
burrows, 270, 272, 274
- 10 **C** colonies, 272
- 11 **D** deer, 269
- 12 **E** eagles, 275
- 13 **G** grasses, 268, 269
grazers, 269
ground squirrels, 274
- 14 **H** habitats, 267
hawks, 275
humans, 275
- 15 **I** Indian grass, 268
- 16 **M** mice, 274
mixed-grass prairies, 268
- 17 **P** prairie dogs, 266, 270, 272, 274
- 18 **R** rabbits, 274
rattlesnakes, 266, 274–275
- 19 **S** short-grass prairies, 268
- 20 **T** tallgrass prairies, 268

Text Features

Underline the page number where you can learn more about deer.

